

Kinspeed

Webshop Installation and Configuration Guide

Version 1.4

Spring 2009

Table of Contents

Table of Contents.....	2
1 - Quick Install WebShop.....	3
2 - Manual Webshop Installation.....	4
2.1 - Prerequisites	4
2.2 - Installing Webshop.....	4
3 - Configuring Webshop	6
3.1 - Sage Line 50.....	6
3.2 - Sage Line 200.....	7
4 - E-Commerce Website Configuration	9
4.1 - What you need.....	9
4.2 - Uploading the Webshop FTP Files.....	9
5 - Troubleshooting.....	10
6 - Frequently Asked Questions.....	12
7 - Developer Information	13
7.1 - The upload script.....	13
7.2 - The download script.....	13
8 - Further Support	15

1 - Quick Install WebShop

Please note there is a video demonstration of this process at <http://www.puterstuff.com/videos/installing-webshop.html>

1. Double click "setup.exe". This will launch the Webshop installer. The installer will search your computer for the prerequisites and download and install any that it cannot find.
2. Click "Next" through the installer
 - a. By default the installer will install Webshop to "C:\Program Files\Kinspeed Ltd\Kinspeed WebShop"
3. Start Webshop by double clicking on the desktop icon
4. Webshop will prompt you to create a database. Click **"Yes"**

Webshop is now installed. Please follow the **"Configuring Webshop"** section

2 - Manual Webshop Installation

2.1 - Prerequisites

1. Webshop needs to be installed on a machine that has access to your accounting software. Additionally Webshop requires a user account that has access to the company you are trying to use.
2. Install .NET Framework 3.5 SP1. You can download this from <http://www.microsoft.com/downloads/details.aspx?FamilyID=AB99342F-5D1A-413D-8319-81DA479AB0D7&displaylang=en>
3. Install Windows Installer 4.5 or higher. You can download this from <http://www.microsoft.com/downloadS/details.aspx?familyid=5A58B56F-60B6-4412-95B9-54D056D6F9F4&displaylang=en#filelist>
4. Install SQL Server. There is a free version available from <http://www.microsoft.com/downloads/details.aspx?FamilyId=7522A683-4CB2-454E-B908-E805E9BD4E28&displaylang=en>
 - a. Make sure you can connect
 - b. Make a note of the following
 - i. Server/Instance Name
 - ii. Username
 - iii. Password
 - c. Make sure remote connections with named pipes is enabled

2.2 - Installing Webshop

1. Double click "Kinspeed WebShop Setup.msi". This will launch the Webshop installer.
2. Follow the onscreen instructions by clicking "**Next**" through the installer
 - a. By default the installer will install Webshop to "C:\Program Files\Kinspeed Ltd\Kinspeed WebShop"
3. Start Webshop by double clicking the icon on the desktop
4. Once you open Webshop you will be greeted with a welcome message. Click "**OK**" to bring up the "Database Connection Details" screen.

Database Connection Details

Please enter the credentials to connect to the SQL Server database below

Server Name: localhost\\SQLExpress

Database Name: Webshop

Authentication: Windows Authentication

Username:

Password:

5. On the “**Advanced Settings**” screen, enter the credentials for connecting to the SQL Server database as noted in the prerequisites.
 - a. If the database does not exist, Webshop will prompt you to create one

Webshop is now installed. Please follow the “**Configuring Webshop**” section

3 - Configuring Webshop

3.1 - Sage Line 50

There is a video demonstration of this available online at

<http://www.puterstuff.com/static/webshop50>

1. Make sure you have 3rd Party Integration enabled. You can request a SDO key directly from Sage by calling 0841 111 77 33. Sage will not charge for this.
2. The first time you run Webshop you be prompted to create a new profile and the new profile Wizard will launch.
 - a. If the new profile wizard does not launch click on “Add New” on the right hand side
3. On the “**Create a New Company**” screen
 - a. Enter a name for the company
 - b. Make sure the “**Accounting System**” is “**Sage Line 50**”
 - c. Click “**Next**”
4. On the “**Set Line 50 Installation Folder**” screen
 - a. Make sure the “**Line 50 Version**” matches the version of Sage you have installed. You can find this by opening Sage and going to “**Help -> About**”
 - b. Make sure the “**Line 50 Installation Folder**” points to where your company data resides. You can find a list of default locations in the FAQ at the end of this document.
 - c. Click “**Next**”
5. On the “**Select Line 50 Company**” screen
 - a. Make sure the “**Company**” is the one that you want Webshop to use
 - b. Enter the username and password that Webshop should connect as. It is recommended that you create a new user exclusively for Webshop.
 - c. Click “**Next**”
6. On the “**Setup and import customer details**” screen
 - a. If you want Webshop to automatically create customers from new orders then make sure this is ticked, and enter a valid number in the “**Auto increment from**” box.
7. On the “**Xcart Setup**” screen
 - a. If you have already setup Webshop on your e-commerce Website, please refer to section 4.2.6
8. On the “**Import Product Groups**” screen
 - a. Tick the “**Import Products and Categories**” checkbox
 - b. Select the “**Import all categories and products**”
 - c. Click “**Next**”

9. On the **“Update Website Wizard”** screen
 - a. Untick all the checkboxes
 - b. Click on **“Finish”**

10. You will now be greeted with the **“Company Manager”** screen. Select the company you have just created and choose **“Select Company”**

Webshop configuration is now complete, you can start using Webshop. You may now want to follow the **“E-Commerce Website Configuration”** section

3.2 - Sage Line 200

There is a video demonstration of this available online at

<http://www.puterstuff.com/static/webshop200>

1. The first time you run Webshop you be prompted to create a new profile and the new profile Wizard will launch.
 - a. If the new profile wizard does not launch click on **“Add New”** on the right hand side

2. On the **“Create a New Company”** screen
 - a. Enter a name for the company
 - b. Make sure the **“Accounting System”** is **“Sage Line 200 (MMS)”**
 - c. Click **“Next”**

3. On the **“Line 200 Wizard”** screen
 - a. Make sure the **“Line 200/MMS Version”** matches the version of Sage you have installed. You can find this by opening Sage and going to **“Help -> About”**
 - b. Enter the username and password that Webshop should connect as. It is recommended that you create a new user exclusively for Webshop.
 - c. Click **“Next”**

4. On the **“Select Line 200 Company”** screen
 - a. Make sure the **“Company”** is the one that you want Webshop to use
 - b. If your company has a password enter it in the **“Password”** box

5. On the **“Line 200 Order Import Settings”** screen
 - a. If you want Webshop to automatically create customers from new orders then make sure this is ticked, and enter a valid number in the **“Auto increment from”** box.
 - b. Select the fulfilment method you want Webshop to use
 - c. Select the Warehouse you want Webshop to allocate stock from

6. On the **“Xcart Setup”** screen
 - a. If you have already setup Webshop on your e-commerce Website, please fill in the required information. Otherwise you can click next and change these settings at a later date

7. On the **“Import Product Groups”** screen
 - a. Tick the **“Import Products and Categories”** checkbox
 - b. Select the **“Import all categories and products”**
 - c. Click **“Next”**

8. On the **“Update Website Wizard”** screen
 - a. Untick all the checkboxes
 - b. Click on **“Finish”**

9. You will now be greeted with the **“Company Manager”** screen. Select the company you have just created and choose **“Select Company”**

Webshop configuration is now complete, you can start using Webshop. You may now want to follow the **“E-Commerce Website Configuration”** section

4 - E-Commerce Website Configuration

4.1 - What you need

1. A FTP Program (e.g. <http://filezilla-project.org/>)
2. Your websites FTP credentials
 - a. Hostname
 - b. Username
 - c. Password
3. Write access to the FTP directory

4.2 - Uploading the Webshop FTP Files

1. Using your FTP program create a connection to your webserver
2. Create a new directory on the root of your server and call it "Webshop"
3. Upload the files in the Webshop installation server folder
 - a. By default this is "**C:\Program Files\Kinspeed Ltd\Kinspeed WebShop\Server**"
4. Open Webshop and select the company you are setting up
5. Go to "**Company -> Options**" from the top menu
6. Select "**Web Settings**" from the tree on the left hand side
 - a. In the "**Upload URL**" box enter
"http://www.yourdomain.com/webshop/upload.php" replacing
"www.yourdomain.com" with your website URL
 - b. In the "**Download URL**" box enter
"http://www.yourdomain.com/webshop/download.php" replacing
"www.yourdomain.com" with your website URL
 - c. If your site requires HTTP authentication tick the "**Requires HTTP Authentication**"
box
 - i. Enter your credentials
 - d. If you want Webshop to use a proxy, then tick the "**Use Proxy**"
 - i. Enter the proxy you want to use as web address e.g.
"http://myproxy.com:8080"

The Website configuration is now complete.

5 - Troubleshooting

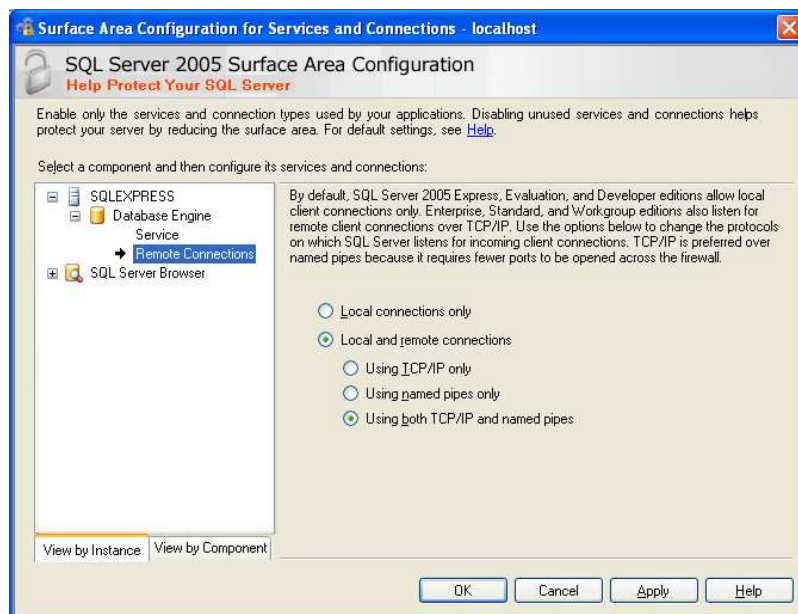
I get an error *“The user is not associated with a trusted SQL Server connection”* or similar

Please follow the instructions: <http://support.microsoft.com/kb/555332> and <http://support.microsoft.com/kb/889615>

I get an error *“Please make sure remote connections are enabled”* or similar

We need to change the SQL Server security settings to allow Webshop to connect (for further information <http://support.microsoft.com/kb/914277>)

- Start the **“SQL Server Surface Area Configuration”** tool by navigating to:
Start > Programs > Microsoft SQL Server 2005 > Configuration Tools > SQL Server Surface Area Configuration
- On the lower part of the screen click on **“Surface Area Configuration For Services and Connection”**
- On the tree view on the left hand side of the screen, click on **“Remote Connections”**
- In the centre of the screen make sure the following are selected:
“Local and remote connections” and **“Using both TCP/IP and named pipes”**



- Click on **“Apply”** and **“Ok”** to the resulting dialog
- On the tree view on the left hand side of the screen, click on **“Service”**

- g. In the centre of the screen click on **“Stop”**
 - h. Wait for the progress bar to disappear and click on **“Start”**
 - i. Click **“Ok”** and exit the program.
-
-

*Sage Line 50 says **“Webshop user is still logged in”** even when Webshop is not running.*

Please delete the **“Queue.dta”** file. This could be located in the the following locations dependant on your version of Sage Line 50

- C:\Documents and Settings\All Users\Application Data\Sage\Accounts\2008\company.000\ACCDATA
 - C:\Program Files\Sage\Accounts 2007\COMPANY.001\ACCDATA
-
-

*When I start Webshop I get an error **“Unable to determine application identity of the caller”** or similar.*

This means that two people are trying to run Webshop at the same time. Webshop is not designed to be multi user. You can resolve this error by closing all other instances of Webshop. To view which instances of Webshop are running, open the task manager by pressing **“Ctrl + Shift + Esc”**. In the **“Processes”** tab make sure **“Show processes from all users”** is ticked and then **“End Process”** on all instances of **“Kinspeed.Webshop.Application.exe”**

6 - Frequently Asked Questions

Q: Will Webshop work with my website, it is written in [Enter programming language]?

A: Yes. The way that Webshop works is that it sends and receives requests over http (the same way as internet browsers such as Internet Explorer, or Firefox works). This means that it is possible to create scripts on your website that read the information and sent and respond accordingly. The information is sent using XML (which makes it easy for the website to process) so as long as your programming language understands this (ASP, PHP, Java etc) then it is possible to make Webshop work with that site. If you want to create these scripts yourself we provide developer information online at <http://www.puterstuff.com/static/webshopdeveloper>. Alternatively, we can create and support these scripts for you. Please email webshop@kinspeed.com to find out more information.

Q: Is it possible for Webshop to bring extra information from the Website?

A: It is possible for you to have customisations within Webshop to make Webshop work this way. These are bespoke to your unique business requirements; if this is something you would like to pursue then please email webshop@kinspeed.com to discuss the possibilities

Q: Is it possible for Webshop to work with my non Sage accounting system, it is [Enter accounting software package]?

A: If the accounting system has an SDK then it may be possible for Webshop to integrate with the software. We would have to create a new adapter for this; you can enquire about different accounting platforms by emailing webshop@kinspeed.com

Q: I have x thousand products, will Webshop work with this? How many products does Webshop support?

A: Webshop has no restrictions on the number of products it can handle, however, there may be a limit imposed by the underlying accounting system.

7 - Developer Information

Webshop sends and receives messages between the host pc and the web server in XML. This is done over HTTP in a similar principle to SOAP.

There needs to be two scripts placed on the web server. One handles the upload of products, categories and customers. The other handles the downloading of orders and customers.

7.1 - The upload script

The main responsibilities of this script are to handle the reading of the Webshop generated XML. Webshop will send requests to this script attached with XML. Your script will need to:

- Read categories / products xml
 - Look at the examples for the schema
 - Update the categories if exist
 - Save the categories if they do not exist
 - Update the products if they exist
 - Save the products
 - Remove any categories / products that have been delete
- Implement uploading of a single category (with products)
- Implement uploading a single product (or selection of products only)
- Implement UploadThumb function
 - Save the file
- Implement UploadProductTaggedFiles function
- Implement UploadCategoryTaggedFiles function
- Implement deleteBatchIDs function
 - Delete the tagged files
 - Delete the images
- Read customers XML
 - Save the customer if it does not exists
 - Update the customer

7.2 - The download script

The main responsibilities of this script are to handle the writing of the order and customer XML. Webshop calls this script when the user presses "Download Orders".

- Create the Order XML with the order and customer details
- Delete / Mark the order as complete when Webshop imports it

For further information and downloads (such as example scripts and XML) you can visit <http://www.puterstuff.com/static/webshopdevelopers> or email webshop@kinspeed.com to speak to a developer.

Tip

It may be beneficial for you to install a HTTP debugging proxy tool such as Fiddler (<http://www.fiddlertool.com>) in order to intercept and debug the message being passed by Webshop.

Tip

You can test the upload features of Webshop without sending a request each time by changing the example upload.php from `open("php://input");` to `“$reader->open("/path/to/your/file.xml");”`

Tip

Most of the work is done in the example scripts. You should just be able to extend the classes in api.php to change where the data is saved.

8 - Further Support

You can get further support for Webshop from Kinspeed Ltd by using the following methods

Documentation, video guides and develop examples are available from <http://www.kinspeed.com/webshop> and <http://www.puterstuff.com/static/webshop150>

You can email the developers at: webshop@kinspeed.com

You can call: 0870 125 0301

8.1 About Kinspeed Ltd

Kinspeed Ltd is a Sage business partner and developer. Kinspeed has been working with Sage since 1985.

Web: <http://www.kinspeed.com/>

Email: enquires@kinspeed.com

Tel: 0870 125 0301

Address:

Kinspeed Ltd
Albion House
Ravenshorn Way
Renishaw
Sheffield
UK
S21 3WY